

# Adults Wellbeing and Health Overview and Scrutiny Committee

14<sup>th</sup> July 2023

Draft Joint Forward Plan 2023/24 –  
2028/29



---

## Report of Sarah Burns, Joint Head of Integrated Strategic Commissioning, North East and North Cumbria Integrated Care Board and Durham County Council

### Electoral division(s) affected:

Countywide

### Purpose of the Report

- 1 The following report outlines the draft Joint Forward Plan received from the ICB on the 4<sup>th</sup> July 2023. There is an opportunity to provide feedback on this plan before final publication of the ICB Joint Forward Plan in September 2023.
- 2 The Adults Wellbeing and Health Overview and Scrutiny Committee are asked to review this and provide comment on the content and the proposed plan for engagement and assurance.

### Executive summary

- 3 The following paper is a draft of the Joint Forward Plan received from the ICB on 4th July 2023.
- 4 Publication of this plan is a national requirement for all Integrated Care Boards (ICBs) and partner Foundation Trusts covering the period 2023/24 – 2028/29.
- 5 Before the Plan is published in September 2023, it is a requirement that the draft is shared with HWB, NHS Trusts, Local Authorities, Health Watch, the Voluntary, Community and Social Enterprise Sector and any other relevant partners.
- 6 Adults Wellbeing and Health Overview and Scrutiny Committee are asked to review and comment on the draft plan before the final version is publicised in September 2023.

## **Recommendation(s)**

- 7 Adults Wellbeing and Health Overview and Scrutiny Committee is recommended to review the draft plan and provide any feedback to the ICB Planning inbox [necsu.icbplanning@nhs.net](mailto:necsu.icbplanning@nhs.net) by the end of August.

## **Background**

- 8 The Joint Forward Plan is a national requirement for all Integrated Care Boards (ICBs) and partner NHS Trusts covering the period 2023/24 – 2028/29.
- 9 The draft Joint Forward Plan is complementary to the Integrated Care Partnership (ICP) Strategy which was published in December 2022. It is a delivery plan for the parts of our strategy related particularly to NHS delivered or commissioned services, but within the broader partnership context.
- 10 The integrated care strategy requires a sustained collaboration across a broad range of partners and stakeholders, beyond the improvements to outcomes that health and care services can deliver in isolation. The ICB have been working closely with their partner organisations to produce the ICB Joint Forward Plan following the publication of the strategy.
- 11 NHS publish national guidance on developing Joint Forward Plans. As a minimum they should demonstrate how the ICB and its partner NHS Trusts:
  - intend to arrange and/or provide NHS services to meet their population’s physical and mental health needs
  - will deliver of the NHS Mandate and NHS Long Term Plan in the area
  - will meet the legal requirements for ICBs.

## **Main Implications**

### *Summary Statement*

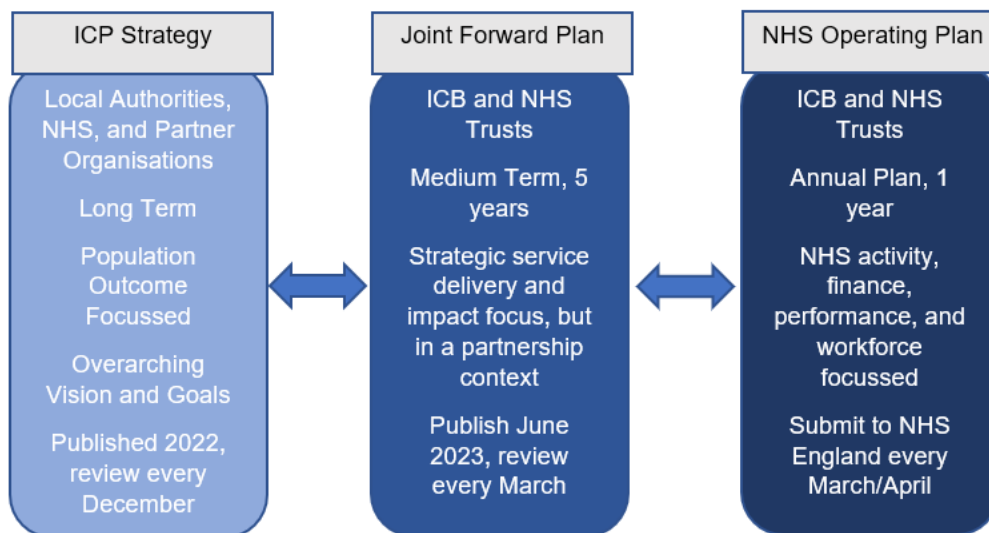
- 12 The Joint Forward Plan provides a:
  - strategic overview of our key priorities and objectives for the medium term.
  - high-level summary of our priorities and objectives
  - summary of the work programmes we will deliver to achieve our medium-term objectives.

13 As part of our Joint Forward Plan, we have developed detailed action plans for:

- the integrated care strategy goals
- the integrated care strategy enablers
- each local authority Place or groups of Places
- our service areas.

### *How do the different Plans fit together?*

For the NHS, our three key documents are summarised below:



### *How frequently will the Joint Forward Plan be Reviewed and Updated?*

14 This is the North East and North Cumbria ICBs first Joint Forward Plan. It will be reviewed and updated annually.

### *North East and North Cumbria Approach*

15 The Joint Forward Plan is aligned to the ICP Better health and wellbeing for all strategy. It is an ambitious strategy organised around four key goals:



### Longer and healthier lives

Reducing the gap between how long people live in the North East and North Cumbria compared to the rest of England.



### Fairer outcomes

As we know not everyone has the same opportunities to be healthy because of where they live, their income, education and employment.



### Better health and care services

Not just high-quality services but the same quality no-matter where you live and who you are.



### Giving our children the best start in life

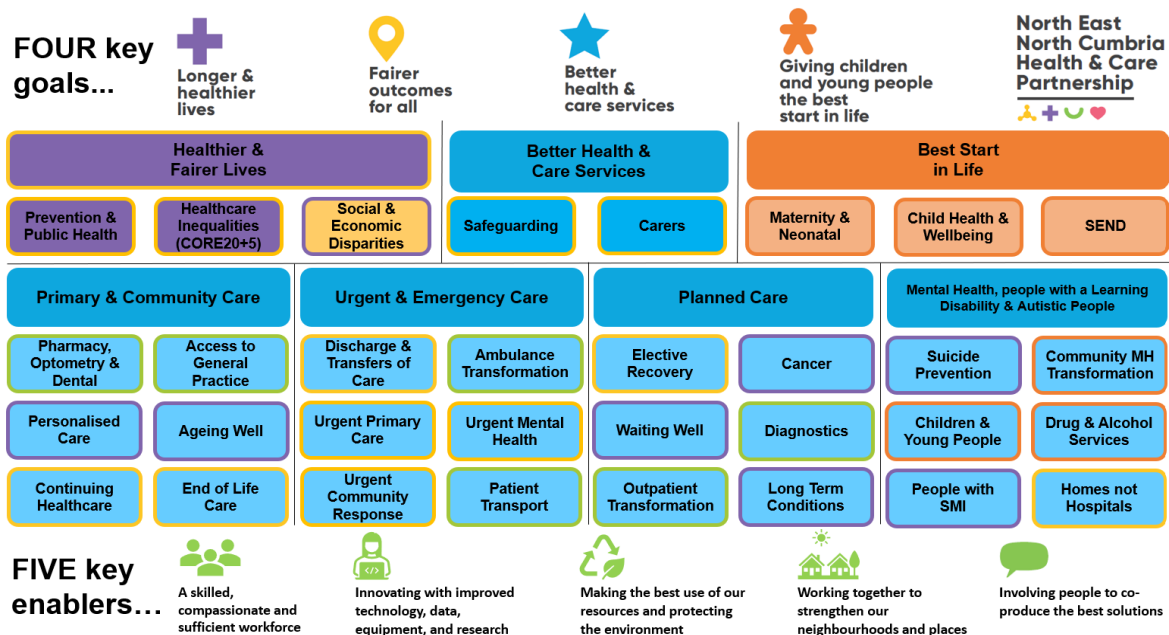
Enabling them to thrive, have great futures and improve lives for generations to come.

16 The Joint Forward Plan is complementary to the ICP Strategy. It is a delivery plan for the parts of our strategy related to NHS delivered or commissioned services, but in the broader partnership context.

17 The Joint Forward Plan is aligned to ICP Strategy. It covers:

- Integrated Care Partnership Strategy **Goals**: to support the delivery of each goal, focussed on NHS delivery as a good partner.
- Integrated Care Partnership Strategy **Enabler Delivery Plans**: An NHS plan for each enabler, in the context of partnership working.
- **Service Delivery Plans**: A Plan for NHS services, such as mental health and primary care, across the North East and North Cumbria.
- A summary of the key work programmes included in each of our **Place Delivery Plans**.

18 Each of these sections of the Plan are interdependent. A key challenge is to ensure links between the different elements of the Plan, summarised in the graphic below.



## *County Durhams Contribution*

- 19 Each Local Authority Place were required to submit a Place Delivery Plan. The Plan for County Durham was developed by key leads working across health and social care and captured all the key activities for partners in health and social care in County Durham, setting out the difference the plan will make and how we will measure that difference.
- 20 Partner organisations received an opportunity to comment on the draft County Durham Place Plan which was finalised and submitted in May 2023 to form part of the Joint Forward Plan.
- 21 The draft Joint Forward Plan includes a short section summarising the common features of the Place Plans, rather than a summary of each Place Plan.

## *Engagement*

- 22 The national guidance on the Joint Forward Plan is comprehensive regarding the requirements for engagement, whilst allowing significant local determination about content and format. The guidance includes three key principles:
  - *Principle 1: Fully aligned with the wider systems ambitions*
  - *Principle 2: Supporting subsidiarity, building on existing local strategies and plans and reflecting universal NHS commitments*
  - *Principle 3: Delivery focussed, including specific objectives, trajectories and milestones*
- 23 Following the engagement with system partners to create the ICP Strategy, the ICB are seeking feedback and views on the Plan to deliver the ambitions agreed.

## **Conclusion**

- 24 Members of the Adults Wellbeing and Health Overview and Scrutiny Committee have an opportunity to review the draft plan and provide feedback to the ICB Planning inbox [necsu.icbplanning@nhs.net](mailto:necsu.icbplanning@nhs.net) by the end of August.

## **Background papers**

- The draft Joint Forward Plan 2023/24 – 2028/29 is included as appendix 2.

## **Other useful documents**

- None

## **Author(s)**

Helen Bell, Provider Management Lead, North of England Commissioning Support

---

## **Appendix 1: Implications**

---

### **Legal Implications**

None.

### **Finance**

None.

### **Consultation**

The plan will be shared with HWB, NHS Trusts, Local Authorities, Health Watch, the Voluntary, Community and Social Enterprise Sector and any other relevant partners.

### **Equality and Diversity / Public Sector Equality Duty**

None.

### **Climate Change**

None.

### **Human Rights**

None.

### **Crime and Disorder**

None.

### **Staffing**

ICBs are required to reduce their running costs by 30% over the next 3 years. During 2023/24, the ICB will develop and deliver its 'ICB 2:0 Programme.

### **Accommodation**

None.

### **Risk**

None.

### **Procurement**

None.



---

## **Appendix 2: Draft Joint Forward Plan 23/24 -2028/29**

---

Attached as a separate document